


Fayoum University		Computers and Programming
Faculty of Engineering		Jan., 20, 2011
Preparatory year		Final Exam - Final Mark = 75
Dr. Karem Mahmoud Ewis		Time Allowed : 2 hours

Model Answer

Answer of (Q1)

(24 Marks)

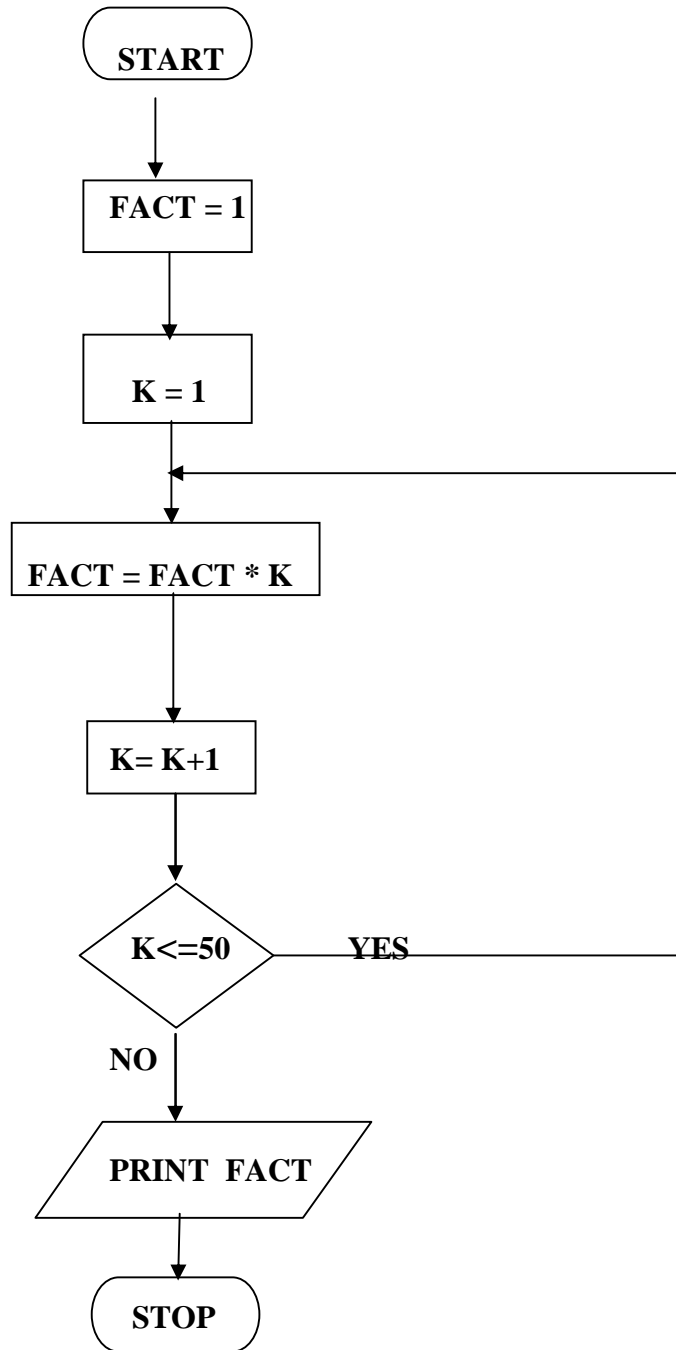
No.	(A)	(B)	(C)	(D)
1				
2				
3				
4				
5				
6				
7				
8				
9				
10				
11				
12				

Answer of (Q2)

2.1 $Z = COT(ABS(X * LOG(SQR(ABS(Y))))))$ (3 Marks)

2.2 IF $x \geq y$ THEN $x = y^{(1/3)}$ (3 Marks)

2.3 IF C = 1 THEN $Z = COT(ABS(X)^{1.5})$
 IF C = 1 THEN $Z = COS(ABS(X)^{1.5})$ (3 Marks)



Answer of (Q5) (10 Marks)

This program is used to compute and print one the roots of equation $(x + \sin(x) - 1 = 0)$, near $x=1$, using Newton Raphson method. (5 Marks)

The outputs are

Iter.No.	Root)
1	.4536975
2	.5105801
3	.5109734

(5 Marks)