

Model Answer

Question 1 [10 points]:

- 1.1 **T.**
- 1.2 **T.**
- 1.3 **F;** Basic language is an example of high level language.
- 1.4 **F;** **SQR** (x) used to computer the square root of x in the **Basic** language.
- 1.5 **F;** **GOTO** statement used to perform unconditional branching.

Question 2 [10 points]:

- 2.1 **$E = C^2 + D^7$**
- 2.2 **$IF K \geq 2 THEN L = K^3 - K^{(3/2)}$**
- 2.3 **$F = ABS(X + EXP(X)) * ((X + 6) / (Y - 3)) ^ 0.2$**
- 2.4 **$Z = COS(K^{(2.5)})$**
- 2.5 **$Z = ATN(X * SIN(X))$**

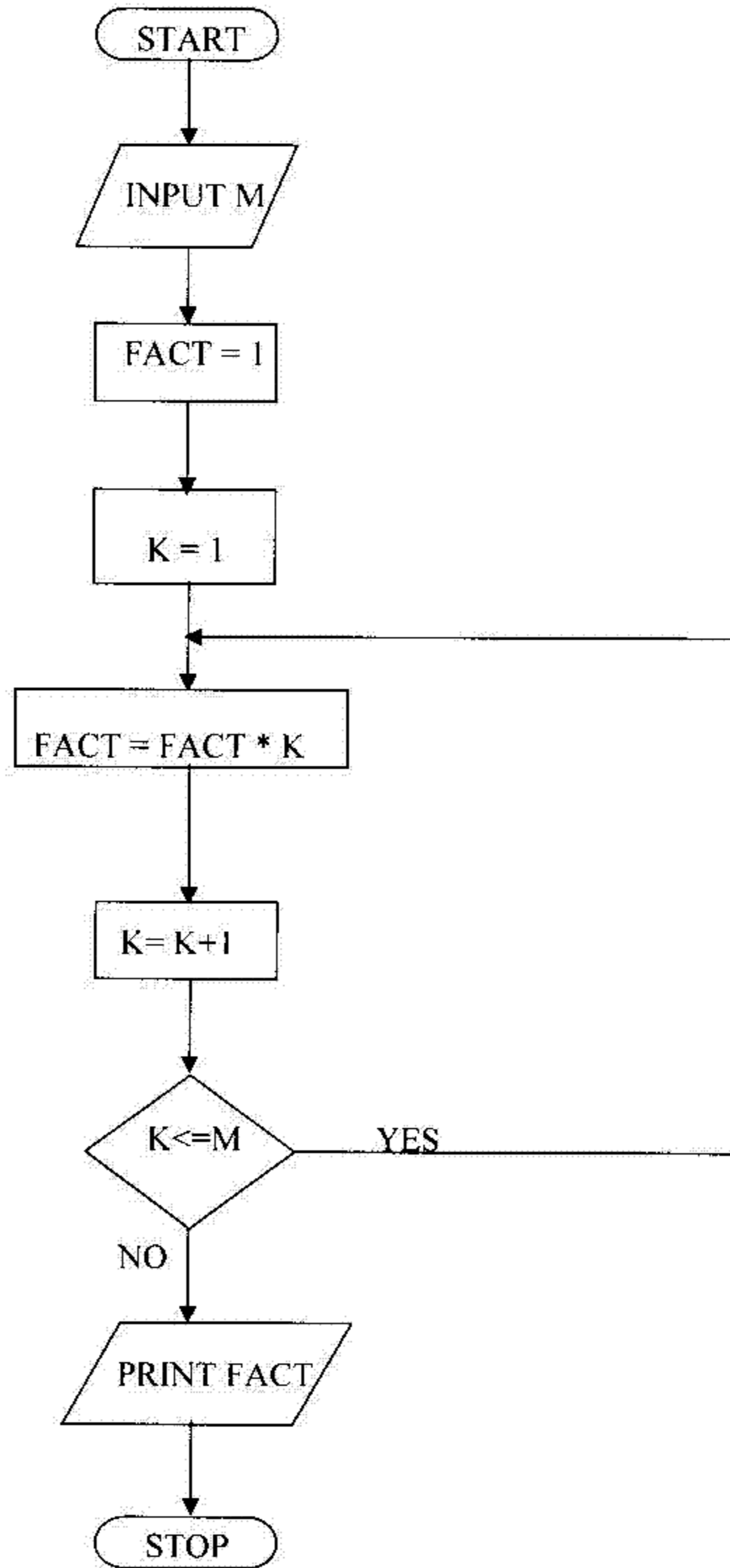
Question 3 [10 points]:

3.1 NOT ((A=3) OR (B >= 1)) AND (C > 1)
 ↓ ↓ ↓ ↓ ↓ ↓
 (5) (1) (3) (2) (6) (4)

3.2 ((A + B / C) >= 7) OR Z OR Y
 ↓ ↓ ↓ ↓ ↓
 (2) (1) (3) (4) (5)

Question 4 [20 points]:

Solution:



```
10      REM THIS PROGRAM IS USED TO EVALUATE  M!
20      INPUT " Enter values of M "; M
30      FACT = 1
40      FOR I = 1 TO M
50      FACT= FACT
60      NEXT I
70      PRINT  M; "!=" , FACT
80      END
```

Question 5 [10 points]:

- 5.1 Compute the maximum number in the given array
- 5.2 The output of the program is 20.

Dr. Eng. Waleed ahmed

(Good Luck)

د.م / كارم محمود

مع دعواتي بالتفوق