

Research Article

Role of *Ulva lactuca* Extract in Alleviation of Salinity Stress on Wheat Seedlings

Wael M. Ibrahim,¹ Refaat M. Ali,¹ Khaulood A. Hemida,¹ and Makram A. Sayed²

¹ Botany Department, Faculty of Science, Fayoum University, Fayoum, Egypt

² Plant Protection Department, Faculty of Agriculture, Fayoum University, Fayoum, Egypt

Correspondence should be addressed to Wael M. Ibrahim; wms01@fayoum.edu.eg

Received 25 July 2014; Accepted 13 October 2014; Published 10 November 2014

Academic Editor: Yong In Kuk

Copyright © 2014 Wael M. Ibrahim et al. This is an open access article distributed under the Creative Commons Attribution License, which permits unrestricted use, distribution, and reproduction in any medium, provided the original work is properly cited.

Seaweeds are potentially excellent sources of highly bioactive materials that could represent useful leads in the alleviation of salinity stress. The effects of presoaking wheat grains in water extract of *Ulva lactuca* on growth, some enzymatic activities, and protein pattern of salinized plants were investigated in this study. Algal presoaking of grains demonstrated a highly significant enhancement in the percentage of seed germination and growth parameters. The activity of superoxide dismutase (SOD) and catalase (CAT) increased with increasing the algal extract concentration while activity of ascorbate peroxidase (APX) and glutathione reductase (GR) was decreased with increasing concentration of algal extract more than 1% (w/v). The protein pattern of wheat seedling showed 12 newly formed bands as result of algal extract treatments compared with control. The bioactive components in *U. lactuca* extract such as ascorbic acid, betaine, glutathione, and proline could potentially participate in the alleviation of salinity stress. Therefore, algal presoaking is proved to be an effective technique to improve the growth of wheat seedlings under salt stress conditions.

1. Introduction

Salinity is one of the major abiotic stresses which limit the yield of major crops [1–3]. It was estimated that up to 20% of irrigated lands in the world are affected by different levels of salinity and sodium content [4]. Salinity stress limits plant growth by adversely affecting various physiological and biochemical processes like photosynthesis, antioxidant phenomena, and nitrogen metabolism [5–7].

Seed germination is an important and critical development phase in the life cycle of plants [8] and is a major limiting factor for establishment plants under saline conditions [9]. Salt stress affects germination percentage, germination rate, and seedling growth in different ways depending on plant species [10, 11].

Seaweeds are macroscopic algae, growing in intertidal and subtidal regions of the sea, and serve as an excellent source of food, fodder, fertilizer, and industrial raw material [12]. The use of marine macroalgae to stimulate the crop production has a long tradition in coastal areas all over

the world. Recently, bioactive substances extracted from marine algae are used in agricultural and horticultural crops as biofertilizers to improve their yield and quality and moreover to reduce the negative environmental impact [13].

Seaweeds provide an excellent source of bioactive compounds such as essential fatty acids, vitamins, amino acids, minerals, and growth promoting substances [14, 15], also they have been reported to stimulate the growth and yield of plants [14], enhance antioxidant properties, and develop tolerance to salinity stress [16].

Although a lot of study on seaweeds has been reported on their taxonomy, distribution, photochemistry, and antibacterial activities, a little work has been done on the influence of their extract on the growth of wheat plant under salt stress conditions. Therefore this study was planned to determine the effect of *Ulva lactuca* extract on wheat grain subjected to salt stress during germination and seedling growth through change in nonenzymatic, enzymatic, antioxidant, and protein patterns.



FIGURE 1: Collected marine macroalgal species *Ulva lactuca*.

2. Material and Method

2.1. Plant Materials. Grains of wheat (*Triticum aestivum* L.) were obtained from Horticultural Research Institute, Agricultural Research Center, Ministry of Agriculture, Giza, Egypt.

Green alga *Ulva lactuca* was collected from Lake Qarun (Fayoum governorate, Egypt) during summer season 2012. The collected algal species (Figure 1) was identified according to Nasr [17] and Jha et al. [18]. The alga was washed with tap water and then with distilled water several times to remove impurities. The fresh seaweed sample was homogenised in distilled water (1:1 w/v) at ambient temperature, filtered, and stored. The liquid extract was taken as 100% concentration. From the latter extract, different concentrations (1%, 5%, and 10%) were prepared using distilled water.

2.2. Experimental Design. A homogenous lot of grains of wheat plant were selected for uniformity of size, shape, and viability. Before germinating, the grains were surface sterilized by soaking for 3 minutes in 2.5% sodium hypochlorite solution, after which they were washed several times with distilled water. The sterilized grains were presoaked in distilled water (control) and different concentrations of algal extract (1, 5, and 10%) for 12 hours. Thereafter the grains were allowed to drain for one hour. The grains were transferred to sterile petri dishes containing two sheets of Whitman number 1 filter paper moistened with 15 mL of different concentrations of NaCl solutions (0, 50, 100, 150, 200, and 250 mM). Each petri dish contained 20 grains and each treatment was replicated 3 times. The grains were allowed to germinate at 25°C in the darkness and 2 mL of NaCl solutions was added to each petri dish on the third day of the germination. At the end of the experimental period (7 days), the germination percentage, seedlings—fresh and dry matter, some metabolites, and some enzymes activities were recorded in addition to protein patterns.

2.3. Electrophoretic Analysis. The extraction of seedling proteins was carried out according to Polar [19]. Fresh seedlings (3:1 buffer volume: fresh weight) were homogenized in ice cold 250 mM Tris-sucrose buffer (pH 7.2) in a chilled pestle. The homogenate was filtered through cheesecloth and centrifuged at 12,500 r.p.m for 20 min at 4°C. Protein extract (400 µL) was added to 100 µL SDS 10% and 25 µL p-mercaptoethanol (P-ME), the mixture was heated in boiling bath for 4 min and was cooled down to the room temperature, and then bromo phenol blue (2 drops) was added. The samples were kept in deep freezer until used.

Polyacrylamide gel electrophoresis (PAGE) in the presence of sodium dodecyl sulfate (SDS) was used for determining the molecular weight of the extracted proteins [20]. Electrophoresis was carried out at 150 volt/hours. The gel was analyzed by TotalLab 1D gel analyzer (TotalLab Company, England). The analysis of protein in the control bands is considered as 100% and the protein content in all other treatments estimated as a percent content according to the content of the control bands.

2.4. Enzyme Activity Assay. Samples of plant tissues (0.5 g) were homogenized in ice cold 0.1 M phosphate buffer (pH = 7.5) containing 0.5 mM EDTA. Each homogenate was centrifuged at 4°C for 15 min at 15000 g. The supernatant was used for enzyme activity assay [21]. SOD activity was estimated according to Gupta et al. [22], CAT activity was measured according to Aebi [23], APX activity was measured according to Yoshimura et al. [24], and GR activity was assayed according to Sairam et al. [25].

2.5. Determination of Glutathione. Glutathione was extracted by grinding 0.5 g of plant tissues in 1% picric acid (w/v) under cold condition. After centrifugation at 10,000 g for 10 min, the supernatant was collected immediately for assay [26].

2.6. Estimation of Ascorbic Acid. The total ascorbic acid content was estimated using Folin phenol reagent [27].

2.7. Algal Biomass Analysis. Soluble sugars were extracted from algal material according to the method adopted by Upmeyer and Koller [28]. The residue which remained after the extraction of soluble sugars was hydrolyzed with 0.2 N H₂SO₄ by reflux in boiling water bath for one hour [29]. Carbohydrate fractions were determined by anthrone method [30]. The soluble protein content of algal material was determined according to the method adopted by Lowry et al. [31]. Free amino acids were determined in the algal extract according to Muting and Kaiser [32]. Proline was determined according to Bates et al. [33]. Betaine and choline were determined according to Arakawa et al. [34]. Phenolic constituents were determined according to Sauvesty et al. [35].

2.8. Statistical Analysis. The experimental design was a random complete block, with three replications. The data were analyzed by the STATGRAPHICS (Statistical Graphics

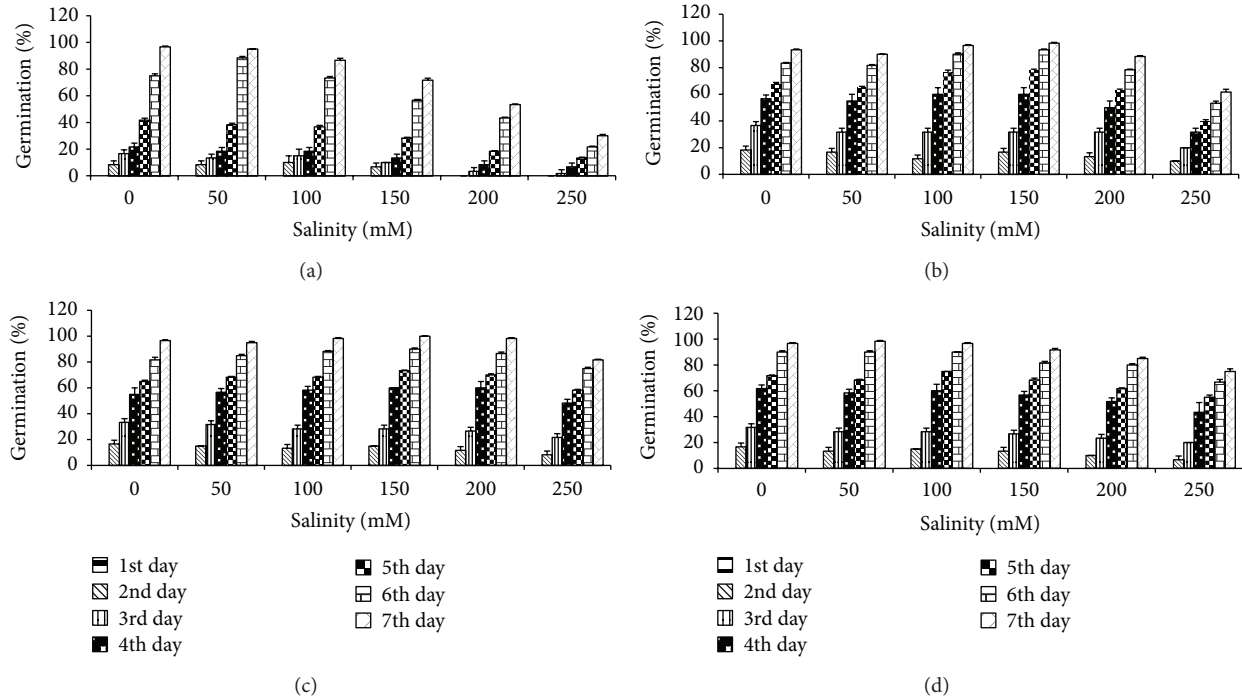


FIGURE 2: Effect of NaCl on germination percentage of *T. aestivum* grains presoaked in different concentrations of *Ulva lactuca*: (a) control, (b) algal extract 1%, (c) algal extract 5%, and (d) algal extract 10%. Data are the mean of three replicates and error bars represent the standard errors of the means.

Corporation, Princeton, USA) statistical package by the *t*-test and ANOVA functions to assess significant differences among means.

3. Results

3.1. Effect of *U. lactuca* Extract on Germination Percentage and Growth Criteria of Wheat Seedlings. The data in Figure 2 revealed a gradual decrease in the germination percentage of *T. aestivum* grains in response to the increment of NaCl concentration. The inhibitory effect was more obvious at the highest level of salinity (250 mM). The final germination percentage of salt stressed *T. aestivum* plants increased significantly with increasing concentration of algal extract when compared with corresponding control.

The changes of growth criteria (fresh-dry matter) of *T. aestivum* grains presoaked in different concentrations of algal extract followed by treatment with different NaCl concentrations are shown in Figure 3. Fresh-dry matter of *T. aestivum* seedlings were markedly decreased with increasing NaCl levels. Fresh-dry matter of *T. aestivum* seedlings were considerably increased with increasing algal extract concentrations from 1 to 10%. Generally, algal extract presoaked grains alleviated the adverse effects of NaCl on the growth of seedlings when compared with the corresponding treatments with NaCl.

3.2. Effect of *U. lactuca* Extract on Enzyme Activities and Antioxidant Contents of Wheat Seedlings. The results in Figure 4 showed that, the activity of enzymes APX, SOD

and CAT in wheat seedling significantly decreased with increasing NaCl levels. However, the activity of GR significantly increased with increasing NaCl levels. Application of algal extract increased the activities of APX and GR at 1% algal extract above that the enzyme activities were decreased. However, the activity of SOD and CAT increased with increasing the concentration of algal extract.

The glutathione and ascorbic acid contents of *T. aestivum* significantly decreased with increasing salinization levels (Figure 5). Application of algal extract increased the contents of both glutathione and ascorbic acid in *T. aestivum* seedling. Soaking of salinity stressed grains in different concentrations of algal extract increased the contents of glutathione and ascorbic acid up to 150 mM NaCl above that they were decreased compared with corresponding control.

3.3. Effect of *U. lactuca* Extract on Protein Profile of Wheat Seedlings. SDS-PAGE protein profile of *T. aestivum* showed variations in the number of bands appearance, disappearance, and variation in the protein content, percentage, and molecular weight of each band compared with control. The SDS-PAGE is shown as an array of proteins with molecular weight ranging between 10.6 and 230 kDa (Figure 6). The total numbers of protein bands in seedlings of *T. aestivum* were 31 bands. The total band numbers have appeared in seedlings treated with different levels of salinity and/or with different concentrations of algal extract (Tables 1–4).

The electrophoretic protein pattern of salinity stressed seedling (Table 1) showed the appearance of 17 bands with molecular weight ranging between 10.6 and 230 kDa, four

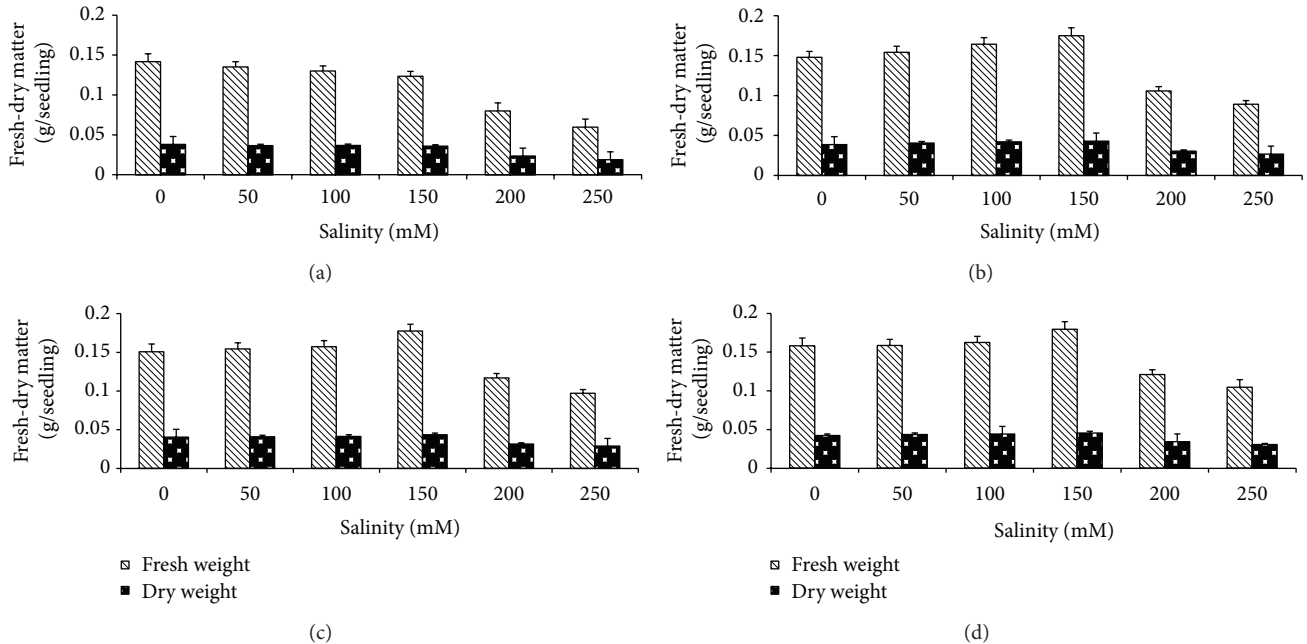


FIGURE 3: Effect of NaCl on fresh-dry matter of *T. aestivum* grains presoaked in different concentrations of *Ulva lactuca*: (a) control, (b) algal extract 1%, (c) algal extract 5%, and (d) algal extract 10%. Data are the mean of three replicates and error bars represent the standard errors of the means.

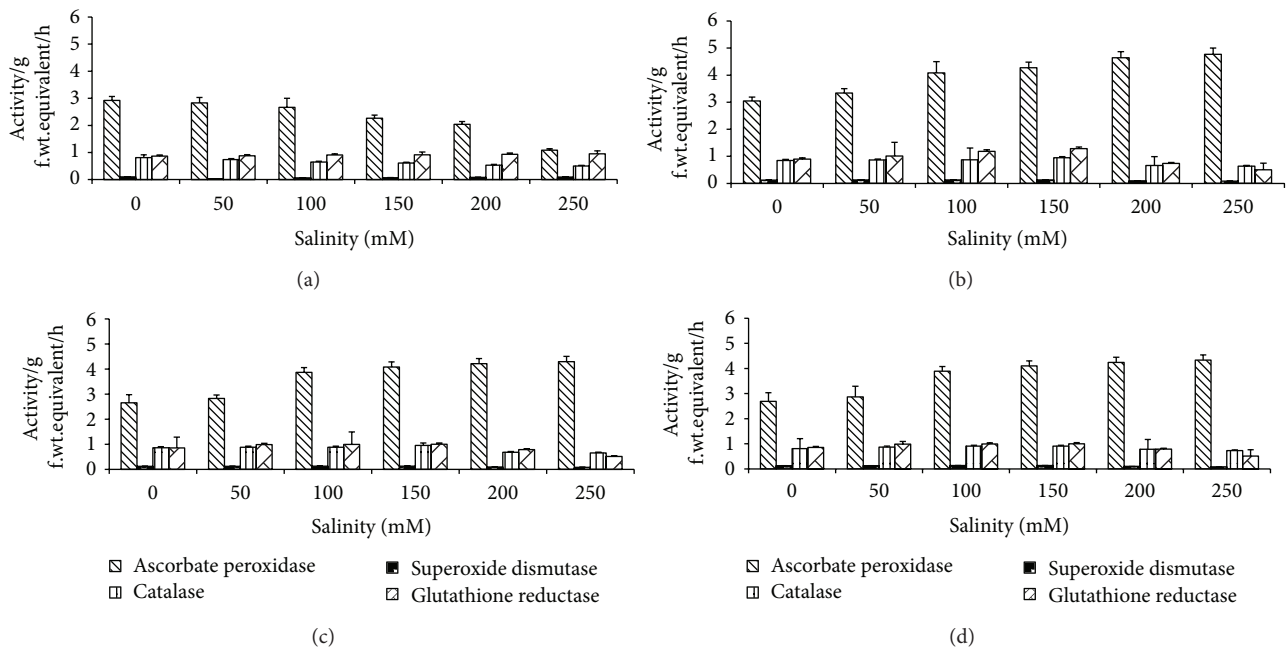


FIGURE 4: Effect of NaCl on enzyme activity of *T. aestivum* grains presoaked in different concentrations of *Ulva lactuca*: (a) control, (b) algal extract 1%, (c) algal extract 5%, and (d) algal extract 10%. Data are the mean of three replicates and error bars represent the standard errors of the means.

bands of them with R_f values 0.785, 0.705, 0.593, and 0.396 disappeared from protein profile of algal treated seedlings.

The protein profile of seedling presoaked in 1% algal extract and then treated with different levels of salinity is represented in Table 2. In this protein profile, 19 bands

have appeared, 6 of them are considered as newly formed bands (compared with corresponding control) appeared with salinity stress 100 and 200 mM. The percent of protein content of bands with R_f values 0.556, 0.659, 0.761, 0.915, 0.958, and 0.988 was increased by 22.39, 66.68, 43.32, 3.77, 30.75,

TABLE 1: Electrophoretic protein pattern of salinity stressed *Triticum aestivum* seedlings presoaked in distilled water.

| M. Wt (KDa) | R_f | Salinity levels | | | | | | | | | | | |
|-------------|-------|-----------------|--------|-----------|--------|-----------|--------------------|-----------|--------------------|-----------|--------------------|-----------|--------|
| | | 0 mM | | 50 mM | | 100 mM | | 150 mM | | 200 mM | | 250 mM | |
| | | % Content | Band % | % Content | Band % | % Content | Band % | % Content | Band % | % Content | Band % | % Content | Band % |
| 230.1 | 0.396 | | | | | 100 | 15.39 ^a | | | | | | |
| 142.39 | 0.412 | | | | | 100 | 15.81 | | | | | | |
| 79.71 | 0.556 | 100 | 14.2 | | | | | | | | | | |
| 49.01 | 0.593 | | | | | | | | | 100 | 24.06 ^a | | |
| 44.72 | 0.636 | | | | | | | | | | | 100 | 18.74 |
| 42.26 | 0.659 | | | | | 100 | 18.68 | | | | | | |
| 34.89 | 0.705 | | | | | | | 100 | 17.13 ^a | | | | |
| 22.85 | 0.74 | 100 | 45.51 | | | | | | | | | | |
| 22.50 | 0.761 | | | | | | | | | | | 100 | 38.5 |
| 20.55 | 0.785 | | | | | | | | | 100 | 30.18 ^a | | |
| 20.12 | 0.795 | | | | | | | 100 | 36.07 | | | | |
| 12.71 | 0.915 | | | | | | | 100 | 46.8 | | | | |
| 11.92 | 0.923 | 100 | 40.29 | | | | | | | | | | |
| 11.35 | 0.939 | | | | | 100 | 50.12 | | | | | | |
| 11.33 | 0.945 | | | | | | | | | | | 100 | 42.75 |
| 11.21 | 0.958 | | | | | | | | | 100 | 45.76 | | |
| 10.63 | 0.988 | | | 100 | 100 | | | | | | | | |

^aBands disappeared from protein profile of *U. lactuca* treated seedlings.

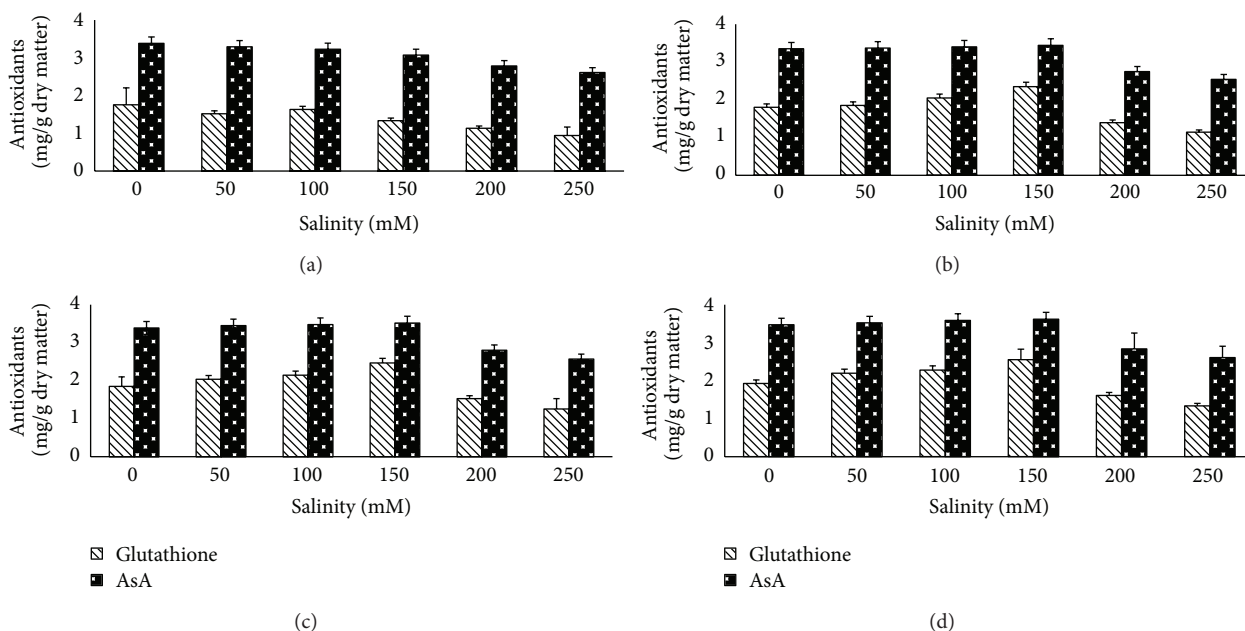


FIGURE 5: Effect of NaCl on glutathione and ascorbate of *T. aestivum* grains presoaked in different concentrations of *Ulva lactuca*: (a) control, (b) algal extract 1%, (c) algal extract 5%, and (d) algal extract 10%. Data are the mean of three replicates and error bars represent the standard errors of the means.

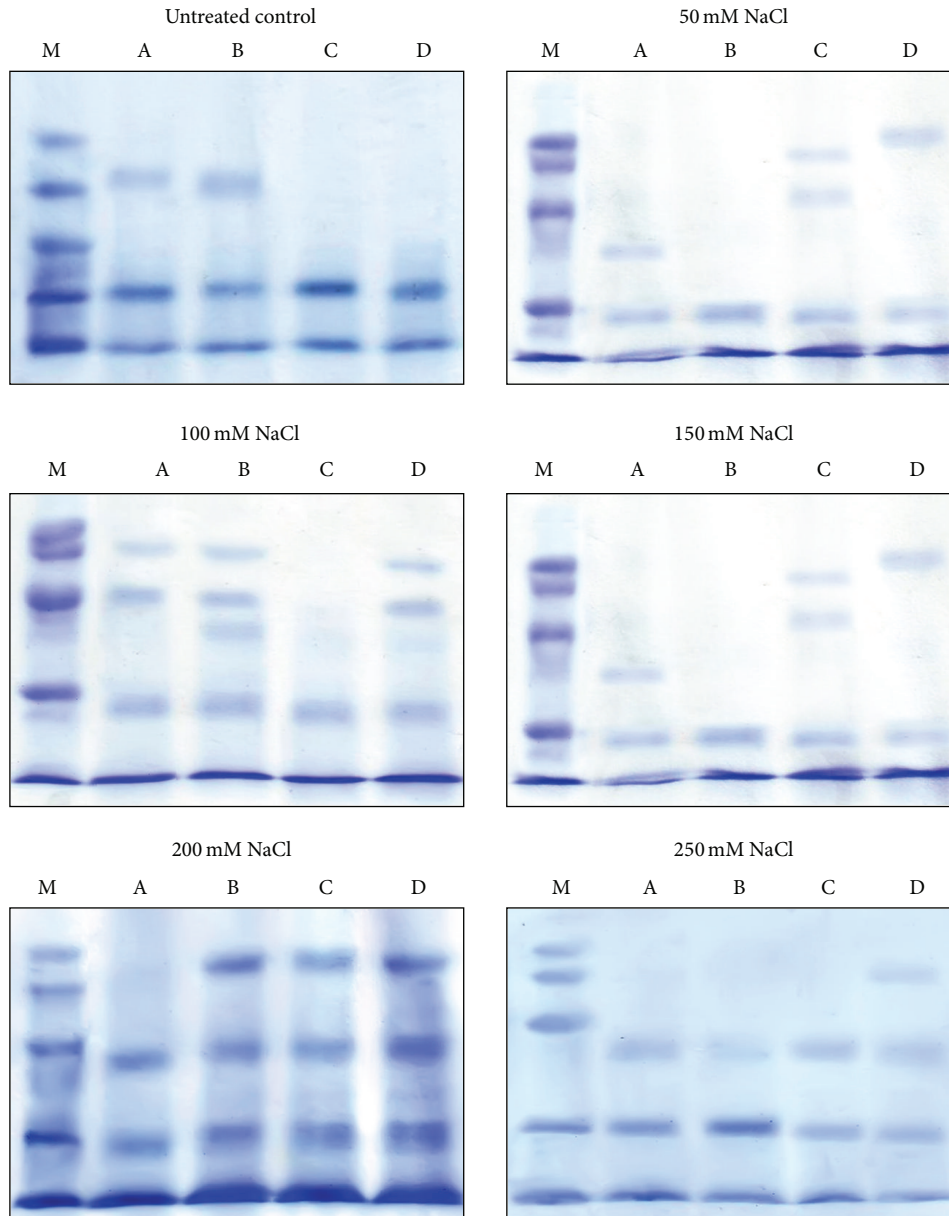


FIGURE 6: SDS-PAGE protein profile of salinity stressed *Triticum aestivum* seedlings presoaked in distilled water (A), 1% *U. lactuca* extract (B), 5% *U. lactuca* extract (C), and 10% *U. lactuca* extract (D). Protein markers (M).

and 60.11%, respectively, when compared with corresponding control. On the other hand, the percent content of the bands identified by R_f values 0.636, 0.740, 0.795, 0.923, 0.939 and 0.945 was decreased when compared with control by 14.05, 19.31, 25.24, 6.14, 9.01, and 3.53%, respectively.

The protein profile of seedling presoaked in 5% algal extract and then treated with different concentrations of NaCl is shown in Table 3. Protein bands with R_f values 0.451, 0.465, 0.578, 0.585, 0.695, and 0.755 have newly appeared within protein profile of seedlings treated with 100, 150, and 200 mM NaCl. Moreover, the percent content of bands with R_f values 0.636, 0.795, 0.915, 0.958, and 0.988 was increased when compared with corresponding control by 17.90, 90.95,

61.76, 19.82, and 154.30%, respectively. The percent content of protein in bands with R_f values 0.74, 0.761, 0.923, 0.939, and 0.945 was decreased by 36.31, 27.53, 7.95, 8.17, and 17.75%, respectively.

The electrophoretic protein pattern of seedlings presoaked in 10% algal extract and treated with different levels of NaCl is represented in Table 4. Presoaking in 10% algal extract enhances the appearance of 19 bands, nine of them have newly appeared with R_f values 0.364, 0.451, 0.465, 0.475, 0.521, 0.585, 0.613, 0.755, and 0.842. The percent content of bands with R_f values 0.659, 0.915, 0.923, 0.939, 0.958, and 0.988 was increased by 93.54, 42.63, 15.33, 5.23, 21.14, and 187.11%, respectively, when compared with corresponding

TABLE 2: Electrophoretic protein pattern of salinity stressed *Triticum aestivum* seedlings presoaked in 1% *Ulva lactuca* extract.

| M. Wt (KDa) | R_f | Salinity levels | | | | | | | | | | | |
|-------------|-------|-----------------|--------|-----------|--------|-----------|-------------------|-----------|--------|-----------|-------------------|-----------|--------|
| | | 0 mM | | 50 mM | | 100 mM | | 150 mM | | 200 mM | | 250 mM | |
| | | % Content | Band % | % Content | Band % | % Content | Band % | % Content | Band % | % Content | Band % | % Content | Band % |
| 215.04 | 0.364 | | | | | 0 | 14.2 ^b | | | | | | |
| 132.44 | 0.431 | | | | | 0 | 9.13 ^b | | | | | | |
| 125.82 | 0.451 | | | | | | | | | 0 | 16.6 ^b | | |
| 98.09 | 0.494 | | | | | 0 | 18.2 ^b | | | | | | |
| 79.72 | 0.556 | 122.39 | 18.91 | | | | | | | | | | |
| 52.73 | 0.585 | | | | | | | | | 0 | 25.1 ^b | | |
| 44.72 | 0.636 | | | | | | | | | | | 85.95 | 14.32 |
| 42.26 | 0.659 | | | | | 166.68 | 23.72 | | | | | | |
| 22.85 | 0.74 | 80.69 | 39.95 | | | | | | | | | | |
| 22.65 | 0.755 | | | | | | | | | 0 | 23.8 ^b | | |
| 22.50 | 0.761 | | | | | | | | | | | 143.32 | 49.04 |
| 20.12 | 0.795 | | | | | | | 74.76 | 35.7 | | | | |
| 12.71 | 0.915 | | | | | | | 103.77 | 64.3 | | | | |
| 11.92 | 0.923 | 93.86 | 41.14 | | | | | | | | | | |
| 11.35 | 0.939 | | | | | 90.99 | 34.72 | | | | | | |
| 11.33 | 0.945 | | | | | | | | | | | 96.47 | 36.65 |
| 11.21 | 0.958 | | | | | | | | | 130.75 | 34.55 | | |
| 10.63 | 0.988 | | | 160.11 | 100 | | | | | | | | |

^bNewly formed bands in protein profile of *U. lactuca* treated seedlings.

TABLE 3: Electrophoretic protein pattern of salinity stressed *Triticum aestivum* seedlings presoaked in 5% *Ulva lactuca* extract.

| M. Wt (KDa) | R_f | Salinity levels | | | | | | | | | | | |
|-------------|-------|-----------------|--------|-----------|--------|-----------|-------------------|-----------|-------------------|-----------|-------------------|-----------|--------|
| | | 0 mM | | 50 mM | | 100 mM | | 150 mM | | 200 mM | | 250 mM | |
| | | % Content | Band % | % Content | Band % | % Content | Band % | % Content | Band % | % Content | Band % | % Content | Band % |
| 125.82 | 0.451 | | | | | | | | | 0 | 13.9 ^b | | |
| 117.84 | 0.465 | | | | | | | 0 | 10.2 ^b | | | | |
| 65.76 | 0.578 | | | | | | | 0 | 9.0 ^b | | | | |
| 52.73 | 0.585 | | | | | | | | | 0 | 24.1 ^b | | |
| 44.72 | 0.636 | | | | | | | | | | | 117.9 | 25.95 |
| 35.83 | 0.695 | | | | | 0 | 29.2 ^b | | | | | | |
| 22.85 | 0.74 | 63.69 | 43.87 | | | | | | | | | | |
| 22.65 | 0.755 | | | | | | | | | 0 | 26.2 ^b | | |
| 22.50 | 0.761 | | | | | | | | | | | 72.47 | 32.76 |
| 20.12 | 0.795 | | | | | | | 190.95 | 38.5 | | | | |
| 12.71 | 0.915 | | | | | | | 161.76 | 42.32 | | | | |
| 11.92 | 0.923 | 92.05 | 56.13 | | | | | | | | | | |
| 11.35 | 0.939 | | | | | 91.83 | 70.84 | | | | | | |
| 11.33 | 0.945 | | | | | | | | | | | 82.25 | 41.29 |
| 11.21 | 0.958 | | | | | | | | | 119.82 | 35.64 | | |
| 10.63 | 0.988 | | | 154.3 | 100 | | | | | | | | |

^bNewly formed bands in protein profile of *U. lactuca* treated seedlings.

TABLE 4: Electrophoretic protein pattern of salinity stressed *Triticum aestivum* seedlings presoaked in 10% *Ulva lactuca* extract.

| M. Wt (KDa) | R_f | Salinity levels | | | | | | | | | | | |
|-------------|-------|-----------------|--------|-----------|--------|-----------|-------------------|-----------|-------------------|-----------|-------------------|-----------|-------------------|
| | | 0 mM | | 50 mM | | 100 mM | | 150 mM | | 200 mM | | 250 mM | |
| | | % Content | Band % | % Content | Band % | % Content | Band % | % Content | Band % | % Content | Band % | % Content | Band % |
| 215.04 | 0.364 | | | | | 0 | 13.4 ^b | | | | | | |
| 142.40 | 0.412 | | | | | 65.25 | 7.47 | | | | | | |
| 125.82 | 0.451 | | | | | | | | | 0 | 17 ^b | | |
| 117.84 | 0.465 | | | | | | | 0 | 20.9 ^b | | | | |
| 104.36 | 0.475 | | | | | 0 | 14.8 ^b | | | | | | |
| 94.99 | 0.521 | | | | | | | | | | | 0 | 14.3 ^b |
| 52.73 | 0.585 | | | | | | | | | 0 | 23.9 ^b | | |
| 46.88 | 0.613 | | | | | | | | | | | 0 | 25.2 ^b |
| 42.26 | 0.659 | | | | | 193.54 | 26.17 | | | | | | |
| 22.85 | 0.74 | 87.46 | 46.14 | | | | | | | | | | |
| 22.65 | 0.755 | | | | | | | | | 0 | 28.1 ^b | | |
| 20.12 | 0.795 | | | | | | | 75.51 | 22.93 | | | | |
| 17.82 | 0.842 | | | | | | | | | | | 0 | 28.5 ^b |
| 12.71 | 0.915 | | | | | | | 142.63 | 56.19 | | | | |
| 11.92 | 0.923 | 115.33 | 53.86 | | | | | | | | | | |
| 11.35 | 0.939 | | | | | 105.23 | 38.17 | | | | | | |
| 11.33 | 0.945 | | | | | | | | | | | 74.25 | 32.06 |
| 11.21 | 0.958 | | | | | | | | | 121.14 | 31 | | |
| 10.63 | 0.988 | | | 287.11 | 100 | | | | | | | | |

^bNewly formed bands in protein profile of *U. lactuca* treated seedlings.

TABLE 5: Some biochemical analyses of marine alga *Ulva lactuca*.

| | | | |
|--------------------------|--------------|----------------------|---------------|
| Protein (mg/g) | 2.5 ± 0.032 | Glutathione (mg/g) | 0.071 ± 0.001 |
| Carbohydrate (mg/g) | | Ascorbic acid (mg/g) | 0.146 ± 0.006 |
| Soluble | 0.58 ± 0.005 | Betaine (mg/g) | 0.146 ± 0.003 |
| Insoluble | 0.23 ± 0.005 | Choline (mg/g) | 0.194 ± 0.003 |
| Phenolic compound (mg/g) | | Amino acids (mg/g) | |
| Glychone | 0.35 ± 0.008 | Free amino acids | 1.39 ± 0.003 |
| Aglychone | 0.23 ± 0.007 | Proline | 0.78 ± 0.005 |

Values are expressed as mean ± standard error of three replicates.

control. The percent content of the bands identified by R_f values 0.740, 0.795, and 0.945 was decreased by 12.54, 24.49, and 25.75%, respectively.

3.4. Biochemical Analysis of *Ulva lactuca* Biomass. The major biochemical components of *U. lactuca* (Table 5) indicated that the algal biomass contains 2.5 mg/g of protein, 0.81 mg/g of carbohydrates, and 0.58 mg/g of phenolic compounds. In addition, the algal material has high content of glutathione (0.071 mg/g), betaine (0.146 mg/g), choline (0.194 mg/g), and ascorbic acid (0.146 mg/g). Moreover, analysis of amino acids revealed that *U. lactuca* contains 1.39 and 0.78 mg/g of free amino acids and proline, respectively.

4. Discussion

Salinity stress is thought to result in production of reactive oxygen species (ROS) in plants causing oxidative stress [36, 37]. To ameliorate the harmful effects of salinity on plant growth, seeds presoaked in certain exogenous protectant such as osmoprotectants [38, 39], plant hormone [40], and antioxidants [41] which have been found to be effective in mitigating the salt induced damage in plant.

The data has clearly demonstrated that NaCl significantly inhibited the germination percentage at all salinity levels. The adverse effect of NaCl has been attributed to changes in osmotic potential resulting from reduced water [42].

The application of *U. lactuca* extracts had a significant stimulatory effect on seed germination of wheat plant under NaCl stress. However, the most effective treatment which had the highest germination percentage was recorded with 10% seaweed extract. These results are in harmony with those reported by Hemmat [43] and Abd El-Baky et al. [44].

U. lactuca extract led to a marked increase in growth of wheat seedling under salinity stress. This increment could be due to the presence of some biochemical compounds in *U. lactuca* extract such as ascorbic acid, proline, and glutathione (Table 5) that might be required for the induction of antioxidant enzymes responsible for decreasing ROS levels in the salinity stressed plant [38, 39, 45].

A correlation between antioxidants capacity and NaCl tolerance has been demonstrated in several plant species. The present investigation was therefore undertaken to study the effect of NaCl on ascorbate and glutathione contents. The results showed that presoaking of grains in algal extract significantly increased the seedlings glutathione and ascorbic acid under saline conditions when compared with water presoaked grains. These results are in accordance with the results obtained by Akladios and Abbas [46] and Hemida et al. [45].

Antioxidative enzymes are the first response mechanism against salinity stress. As such, their activity profiles are important in the evaluation of tolerance mechanisms. The results showed significantly decrease in the activities of APX, SOD, and CAT in salinity stressed seedlings. Presoaking of grains in different concentrations of *U. lactuca* extract increased the activities of APX, SOD, and CAT with increasing the concentration of algal extract. Increment of the enzyme activities of salinity stressed seedlings presoaked in different concentrations of algal extract could be attributed to the presence of antioxidative compounds such as ascorbic acid (0.146 mg/g), proline (0.78 mg/g), betaine (0.146 mg/g), and glutathione (0.071 mg/g) in *U. lactuca* extract [45, 47, 48].

Under stress conditions, total protein synthesis usually decreases in plant cells [49], but some proteins that are specifically responding to stress (stress induced proteins) are induced in many plants [50]. Although the expression and function of such proteins are nuclear, it is suggested that there is a relationship between some forms of plant stress adaptation and the expression of stress induced proteins [50, 51].

One possible explanation for bands which have disappeared in protein pattern of salinity stressed seedlings and newly formed in protein pattern of algal presoaked seedlings is that the gene(s) responsible for certain proteins had not been completely suppressed, but inhibited as the result of stress [52, 53]. Presoaking of grains with *U. lactuca* extracts alleviates salinity stress and induces the formation of these proteins in seedlings cells, changing number and percentage of bands in protein pattern of algal presoaked seedlings.

5. Conclusions

To our knowledge, this is the first study for the application of *Ulva lactuca* extract to overcome the negative effect of NaCl

on wheat seedlings. Our results confirmed that pretreatment of grains increases the germination percentage, seedling growth, and antioxidant content and induces the formation of new bands in the protein pattern. Overall, it can be concluded that algal extract could improve physiological properties of wheat seedlings under salt stress conditions. Hence, work in this regard should continue to characterize the specific bioactive materials in *U. lactuca* extract responsible for the alleviation of salinity stress in order to evaluate its efficiency to adverse effects of salinity on growth of wheat plants.

Conflict of Interests

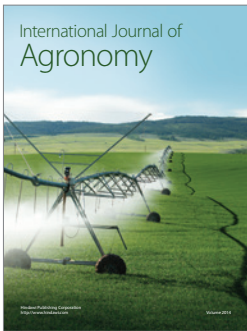
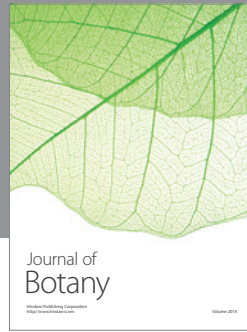
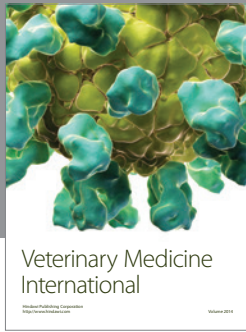
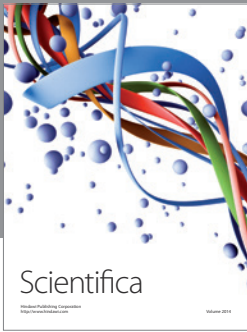
The authors declare that there is no conflict of interests regarding the publication of this paper.

References

- [1] R. Farhoudi, "Effect of salt stress on physiological and morphological parameters of rapeseed cultivars," *Advances in Environmental Biology*, vol. 5, no. 8, pp. 2501–2508, 2011.
- [2] J. Liu, J. Xia, Y. Fang, T. Li, and L. Liu, "Effects of salt-drought stress on growth and physiobiochemical characteristics of *Tamarix chinensis* seedlings," *The Scientific World Journal*, vol. 2014, Article ID 765840, 7 pages, 2014.
- [3] C.-S. Gu, L.-Q. Liu, C. Xu, Y.-H. Zhao, X.-D. Zhu, and S.-Z. Huang, "Reference gene selection for quantitative real-time RT-PCR normalization in *Iris. lactea* var. *chinensis* roots under cadmium, lead, and salt stress conditions," *The Scientific World Journal*, vol. 2014, Article ID 532713, 7 pages, 2014.
- [4] B. Mostafazadeh-fard, M. Heidarpour, Q. A. Aghakhani, and M. Feizi, "Effect of irrigation water salinity and leaching on soil chemical properties in an arid region," *International Journal of Agriculture and Biology*, vol. 3, pp. 166–469, 2007.
- [5] S. C. Misra, R. Randive, V. S. Rao, M. S. Sheshshayee, R. Serraj, and P. Monneveux, "Relationship between carbon isotope discrimination, ash content and grain yield in wheat in the Peninsular Zone of India," *Journal of Agronomy and Crop Science*, vol. 192, no. 5, pp. 352–362, 2006.
- [6] Z. S. Mehr, H. Khajeh, S. E. Bahabadi, and S. K. Sabbagh, "Changes on proline, phenolic compounds and activity of antioxidant enzymes in *Anethum graveolens* L. under salt stress," *International journal of Agronomy and Plant Production*, vol. 3, pp. 710–715, 2012.
- [7] G. Wu, Z. Zhou, P. Chen, X. Tang, H. Shao, and H. Wang, "Comparative ecophysiological study of salt stress for wild and cultivated soybean species from the Yellow River Delta, China," *The Scientific World Journal*, vol. 2014, Article ID 651745, 13 pages, 2014.
- [8] A. Lianes, H. Reinoso, and V. Luna, "Germination and early growth of *Prosopis strombulifera* seedlings in different saline solutions," *World Journal of Agricultural Sciences*, vol. 1, no. 2, pp. 120–128, 2005.
- [9] B. D. Besma and D. Mounir, "Biochemical and mineral responses of okra seeds (*Abelmoschus esculentus* L. variety marsaouia) to salt and thermal stresses," *Journal of Agronomy*, vol. 9, no. 2, pp. 29–37, 2010.
- [10] R. Ríos-Gómez, C. E. Salas- García, A. Monroy-Ata, and E. Solano, "Salinity effect on *Prosopis laevigata* seedlings," *Terra Latinoamericana*, vol. 28, no. 2, pp. 99–107, 2010.

- [11] Y. Tian, B. Guan, D. Zhou, J. Yu, G. Li, and Y. Lou, "Responses of seed germination, seedling growth, and seed yield traits to seed pretreatment in maize (*Zea mays* L.)," *The Scientific World Journal*, vol. 2014, Article ID 834630, 8 pages, 2014.
- [12] C. Parthiban, C. Saranya, A. Hemalatha, B. Kavitha, and P. Anantharaman, "Effect of seaweed liquid filterer of *Spatoglossum asperum* on the growth and pigment content of *Vigna radiata*," *International Journal of Recent Scientific Research*, vol. 4, no. 9, pp. 1418–1421, 2013.
- [13] A. A. Houssien, A. A. Ismail, and F. S. Sabra, "Bioactive substances extracted from seaweeds as biocontrol agents, effects and identification," *Journal of Agricultural Research Kafar El-Sheikh University*, vol. 37, no. 1, pp. 460–473, 2011.
- [14] K. R. Rao, "Effect of seaweed extract on *Zyziphus mauritiana* Lamk.," *Journal of Indian Botanical Society*, vol. 71, pp. 19–21, 1991.
- [15] N. Bhasker and K. Miyashita, "Lipid composition of *Padina tetratomatica* (Dictyotales, Phaeophyta), a brown seaweed of the west coast of India," *Indian Journal of Fisheries*, vol. 52, pp. 263–268, 2005.
- [16] X. Zhang, E. H. Ervin, and R. E. Schmidt, "Plant growth regulators can enhance the recovery of Kentucky bluegrass sod from heat injury," *Crop Science*, vol. 43, no. 3, pp. 952–956, 2003.
- [17] A. H. Nasr, "A report on some marine algae collected from the vicinity of Alexandria," *Notes and Memoirs* 36, Fouad I Institute of Hydrobiology and Fisheries, Government Press, Bulaq, Cairo, Egypt, 1940.
- [18] B. Jha, C. R. K. Reddy, M. C. Thakur, and M. U. Rao, *Seaweeds of India: The Diversity and Distribution of Seaweeds of Gujarat Coast*, Springer, Dordrecht, The Netherlands, 2009.
- [19] E. Polar, "Variations in zinc content of subcellular fractions from young and old roots, stems and leaves of Broad beans (*Vicia faba*)," *Plant Physiology*, vol. 338, no. 3, pp. 159–165, 1976.
- [20] U. K. Laemmli, "Cleavage of structural proteins during the assembly of the head of bacteriophage T4," *Nature*, vol. 227, no. 5259, pp. 680–685, 1970.
- [21] E. Esfandiari, M. R. Shakiba, S. A. Mahboob, H. Alyari, and M. Toorchi, "Water stress, antioxidant enzyme activity and lipid peroxidation in wheat seedling," *Journal of Food, Agriculture and Environment*, vol. 5, no. 1, pp. 149–153, 2007.
- [22] A. S. Gupta, J. L. Heinen, A. S. Holaday, J. J. Burke, and R. D. Allen, "Increased resistance to oxidative stress in transgenic plants that overexpress chloroplastic Cu/Zn superoxide dismutase," *Proceedings of the National Academy of Sciences of the United States of America*, vol. 90, no. 4, pp. 1629–1633, 1993.
- [23] H. Aebi, "Catalase *in vitro*," *Methods in Enzymology*, vol. 105, pp. 121–126, 1984.
- [24] K. Yoshimura, Y. Yabuta, T. Ishikawa, and S. Shigeoka, "Expression of spinach ascorbate peroxidase isoenzymes in response to oxidative stresses," *Plant Physiology*, vol. 123, no. 1, pp. 223–233, 2000.
- [25] R. K. Sairam, K. V. Rao, and G. C. Srivastava, "Differential response of wheat genotypes to long term salinity stress in relation to oxidative stress, antioxidant activity and osmolyte concentration," *Plant Science*, vol. 163, no. 5, pp. 1037–1046, 2002.
- [26] M. E. Anderson, "Determination of glutathione and glutathione disulfide in biological samples," *Methods in Enzymology*, vol. 113, pp. 548–555, 1985.
- [27] S. K. Jagota and H. M. Dani, "A new colorimetric technique for the estimation of vitamin C using folin phenol reagent," *Analytical Biochemistry*, vol. 127, no. 1, pp. 178–182, 1982.
- [28] D. J. Upmeyer and H. R. Koller, "Diurnal trends in net photosynthetic rate and carbohydrate levels of soybean leaves," *Plant Physiology*, vol. 51, no. 5, pp. 871–874, 1973.
- [29] J. G. Streeter and D. L. Jeffers, "Distribution of total non-structural carbohydrates in soybean plants having increased reproductive load," *Crop Science*, vol. 19, pp. 729–734, 1979.
- [30] J. E. Hedge and B. T. Hofreiter, "Methods," in *Carbohydrate Chemistry*, R. L. Whistler and J. N. BeMiller, Eds., vol. 17, p. 420, Academic Press, New York, NY, USA, 1962.
- [31] O. H. Lowry, N. J. Rosenbrough, A. L. Farr, and R. J. Randall, "Protein measurement with the Folin phenol reagent," *The Journal of Biological Chemistry*, vol. 193, no. 1, pp. 265–275, 1951.
- [32] D. Muting and E. Kaiser, "Spectrophotometric method of determining of α -amino-N in biological materials by means of the ninhydrin reaction," *Hoppe-Seyler's Zeitschrift für Physiologische Chemie*, vol. 332, pp. 276–289, 1963.
- [33] L. S. Bates, R. P. Waldren, and I. D. Teare, "Rapid determination of free proline for water-stress studies," *Plant and Soil*, vol. 39, no. 1, pp. 205–207, 1973.
- [34] K. Arakawa, M. Katayama, and T. Takabe, "Levels of betaine and betaine aldehyde dehydrogenase activity in the green leaves, and etiolated leaves and roots of barley," *Plant and Cell Physiology*, vol. 31, no. 6, pp. 797–803, 1990.
- [35] A. Sauvesty, F. Page, and J. Huot, "A simple method for extracting plant phenolic compounds," *Canadian Journal of Forest Research*, vol. 22, no. 5, pp. 654–659, 1992.
- [36] T. Karuppanapandian, J.-C. Moon, C. Kim, K. Manoharan, and W. Kim, "Reactive oxygen species in plants: their generation, signal transduction, and scavenging mechanisms," *Australian Journal of Crop Science*, vol. 5, no. 6, pp. 709–725, 2011.
- [37] P. Sharma, A. B. Jha, R. S. Dubey, and M. Pessarakli, "Reactive oxygen species, oxidative damage, and antioxidative defense mechanism in plants under stressful conditions," *Journal of Botany*, vol. 2012, Article ID 217037, 26 pages, 2012.
- [38] M. Anamul Hoque, E. Okuma, M. Nasrin Akhter Banu, Y. Nakamura, Y. Shimoiishi, and Y. Murata, "Exogenous proline mitigates the detrimental effects of salt stress more than exogenous betaine by increasing antioxidant enzyme activities," *Journal of Plant Physiology*, vol. 164, no. 5, pp. 553–561, 2007.
- [39] N. Nounjan, P. T. Nghia, and P. Theerakulpisut, "Exogenous proline and trehalose promote recovery of rice seedlings from salt-stress and differentially modulate antioxidant enzymes and expression of related genes," *Journal of Plant Physiology*, vol. 169, no. 6, pp. 596–604, 2012.
- [40] N. Iqbal, A. Masood, and N. A. Khan, "Phytohormones in salinity tolerance: ethylene and gibberellins cross talk," in *Phytohormones and Abiotic Stress Tolerance in Plants*, N. A. Khan, R. Nazar, N. Iqbal, and N. A. Anjum, Eds., pp. 77–98, Springer, Berlin, Germany, 2012.
- [41] F. Azzedine, H. Gherroucha, and M. Baka, "Improvement of salt tolerance in durum wheat by ascorbic acid application," *Journal of Stress Physiology Biochemistry*, vol. 7, no. 1, pp. 27–37, 2011.
- [42] S. A. R. Mousavi, A. Chauvin, F. Pascaud, S. Kellenberger, and E. E. Farmer, "Glutamate receptor-like genes mediate leaf-to-leaf wound signalling," *Nature*, vol. 500, no. 7463, pp. 422–426, 2013.
- [43] K. Hemmat, "Role of glutathione and polyadenylic acid on the oxidative defense systems of two different cultivars of canola seedlings grown under saline condition," *Australian Journal of Basic and Applied Sciences*, vol. 1, no. 3, pp. 323–333, 2007.

- [44] H. H. Abd El-Baky, F. K. El Baz, and G. S. El-Baroty, "Evaluation of marine alga *Ulva Lactuca* L. as a source of natural preservative ingredient," *Electronic Journal of Environmental, Agricultural and Food Chemistry*, vol. 7, no. 11, pp. 3353–3367, 2008.
- [45] K. A. Hemida, R. M. Ali, W. M. Ibrahim, and A. S. Makram, "Ameliorative role of some antioxidant compounds on physiological parameters and antioxidants response of wheat (*Triticum aestivum* L.) seedlings under salinity stress," *Life Science Journal*, vol. 11, no. 7, pp. 324–342, 2014.
- [46] S. A. Akladios and S. M. Abbas, "Alleviation of seawater stress on tomato by foliar application of aspartic acid and glutathione," *Journal of Stress Physiology & Biochemistry*, vol. 9, no. 3, pp. 282–298, 2013.
- [47] S. Deivanai, R. Xavier, V. Vinod, K. Timalata, and O. F. Lim, "Role of exogenous proline in ameliorating salt stress at early stage in two rice cultivars," *Journal of Stress Physiology & Biochemistry*, vol. 7, no. 4, pp. 157–174, 2011.
- [48] A. L. Tuna, C. Kaya, H. Altunlu, and M. Ashraf, "Mitigation effects of non-enzymatic antioxidants in maize (*Zea mays* L.) Plants under salinity stress," *Australian Journal of Crop Science*, vol. 7, no. 8, pp. 1181–1188, 2013.
- [49] K. K. Surendar, D. D. Devil, I. Ravi, P. Jeyakumar, and K. Velayudham, "Water stress affects plant relative water content, soluble protein, total chlorophyll content and yield of *Ratoon Banana*," *International Journal of Horticulture*, vol. 3, no. 17, pp. 96–103, 2013.
- [50] N. M. Patil, "Synthesis of stress proteins in *Carthamus tinctorius* L Cv BHIMA under salt stress," *World Journal of Science and Technology*, vol. 1, no. 7, pp. 43–48, 2011.
- [51] Z. H. Messaitfa, A. I. Shehata, F. El Quraini, A. A. Al Hazzani, H. Rizwana, and M. S. El wahabi, "Proteomics analysis of salt stressed sunflower (*Helianthus annuus*)," *International Journal of Pure & Applied Bioscience*, vol. 2, no. 1, pp. 68–17, 2014.
- [52] A. A. El-Obeidy, M. A. Fayek, and R. A. Mohmoud, "Quantifying salt tolerance responses of some banana genotypes in vitro," in *Proceedings of the 1st International Conference on: "Biotechnology Applications for the Arid Regions"*, Y. A. Shayji, J. S. Siolhu, M. Saleem, and K. Guerinik, Eds., pp. 135–165, Kuwait City, Kuwait, 2001.
- [53] A. A. Mohamed, "Two-dimensional electrophoresis of soluble proteins and profile of some isozymes isolated from maize plant in response to NaCl," *Research Journal of Agriculture and Biological Sciences*, vol. 1, no. 1, pp. 38–44, 2005.



Hindawi
Submit your manuscripts at
<http://www.hindawi.com>

